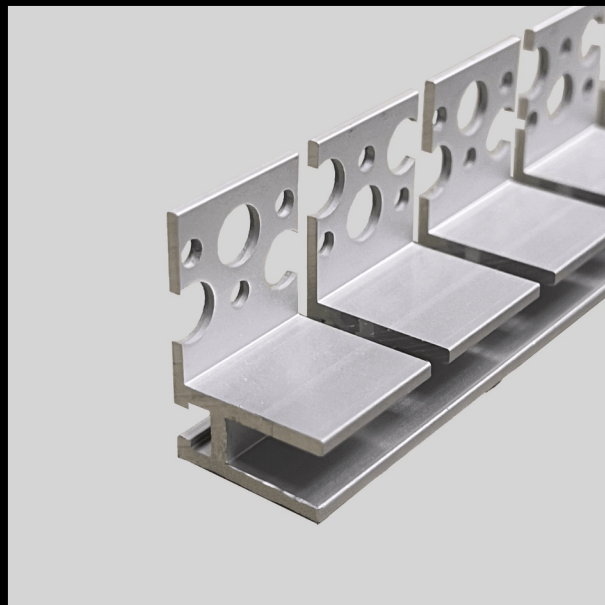


The LED Flex Aluminium Channel is an essential component for all our LED installations, ensuring a professional finish.

Primarily designed to protect LED Flex Extreme from impact, but also prevents bends or discrepancies that could affect the visual appeal of your lighting installation.

Beyond aesthetics, the channel also assists heat dissipation, allowing LEDs to operate at optimal temperatures, significantly extending their lifespan.

With a sleek design, our aluminium profiles integrate seamlessly into any residential, commercial, or outdoor application.



### FEATURES

LENGTH	2m
MATERIAL	Aluminium
THICKNESS	2mm

### INSTALLATION INFORMATION

Designed for 20mm Porcelain

FIXING	Tiled-In/Adhesive
WARRANTY	3 years
TEMPERATURE	-20°C - 50°C

### VARIATIONS

Other channels available for different installation scenarios

